



RELIABLE + READY

NOVEMBER 2024

Rhinestahl CTS Overview

EXPORT STATEMENT: Warning—This document may contain technical data whose export is restricted by the Arms Export Control Act (Title 22, U.S.C. SEC 2751, et seq.) or the Export Administration Act of 1979, as amended, Title 50, U.S.C., App 2401 et seq. Transfer of this technical data by any means to a Non-US Person, whether in the United States or abroad, without the proper U.S. Government authorization (e.g, License, exemption, NLR) is strictly prohibited.

PROPRIETARY INFORMATION: This presentation contains information that is proprietary or confidential to RH Aero Systems. It may not be shared with any 3rd party or reproduced without express written consent by RH Aero.

AVIATION SUPPORT EQUIPMENT + SERVICES





- Formed in 2024
- Global HQ in Mason, OH, USA
- Privately owned & operated



- Founded in 1967
- Leading OEM engine tooling provider for commercial, military and aeroderivative industries



- Founded in 1965
- Market leader of Ground Support Equipment & Airframe Tooling

RHINESTAHL HISTORY

1967 – Rhinestahl, a privately owned company, is founded

2009 – Acquires GE Customer Tooling Solutions

2015 – Becomes CFM Licensed Supplier for LEAP tooling

2021 – Becomes GE MSO's Exclusive Military Tooling Provider

2022 – Awarded F110 Support Equipment IDIQ for 7 years

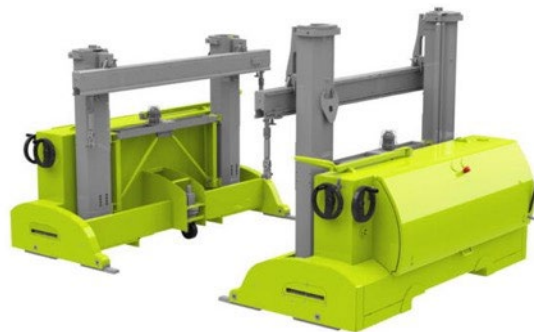
2024 – Rhinestahl Purchases Hydro GSE and Services

Market leader of Ground Support Equipment & Airframe Tooling

Comprehensive Product + Service Offerings

Ground Support Equipment

- Engine Stand Sales/Leasing
- Tri-pod Jacks
- Access Stands
- COBRA Engine Change System



COBRA

Engine + Airframe Tooling

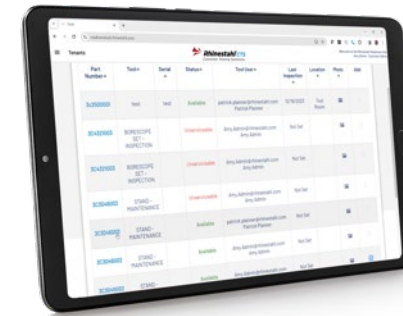
- 100% OEM Alignment
- Configuration Management
- Tool Provisioning + Workscoping
- GE's 360 Foam Wash



GE's 360 Foam Wash

Integrated Services

- Repairs + Upgrades
- Load Testing
- Calibration
- Training
- Asset Management + Readiness Hub



READINESSHUB

Engineered Solutions

- Fuselage Transportation
- Installation Equipment
- FutureDrive NG+ Turning Tool with Two-Way Communication



FutureDriveNG+

Industry-Leading Capabilities



Ready to Serve

OEM-approved, comprehensive engine tooling coverage and support for all CFM, GE, P&W, and Rolls-Royce engine programs representing more than 96% of the overall engine market



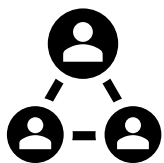
24 Global Service Centers

Engine and airframe tooling and GSE repair, upgrades, calibrations and load testing



Reliable Expertise

Experience with more than 3,000 GSE products, engine transport and maintenance stands, and over 100,000 maintenance tools for countless different types of aircraft and engines for commercial, military and power programs



Global Team

More than 825 skilled professionals operating with shared values to reshape the experience and support of OEMs and their customers and other stakeholders across the aviation industry

TOOLING LIFE CYCLE

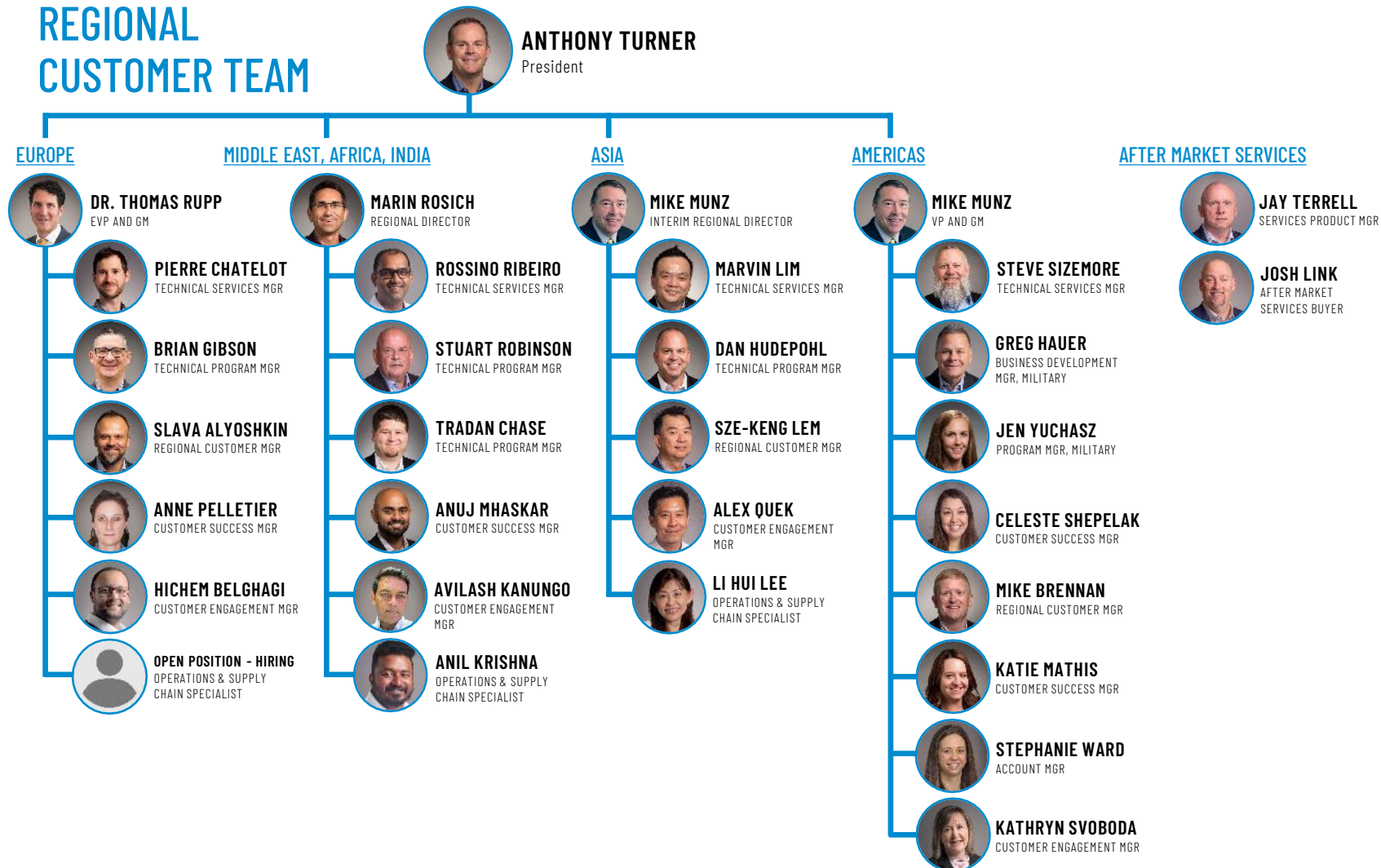
Many customers consider tooling a one-time purchase – yet ALL tools essential to support a mission-critical program require effective processes to maintain peak performance.



The background of the slide is a solid dark blue color. Overlaid on this background are several thick, flowing, wavy lines in a lighter shade of blue. These lines originate from the left side and curve towards the right, creating a sense of movement and depth. The lines vary in thickness and curvature, some appearing more like broad strokes while others are more defined.

GLOBAL PRESENCE

REGIONAL CUSTOMER TEAM



IN REGION FOR REGION CUSTOMER SUPPORT MODEL



The background of the slide is a solid blue color. Overlaid on this background are several white, curved, rib-like lines that sweep across the frame from the bottom left towards the top right, creating a sense of motion and depth.

ETU OVERHAUL / Shipping Container Support

CONTAINER SUPPORT

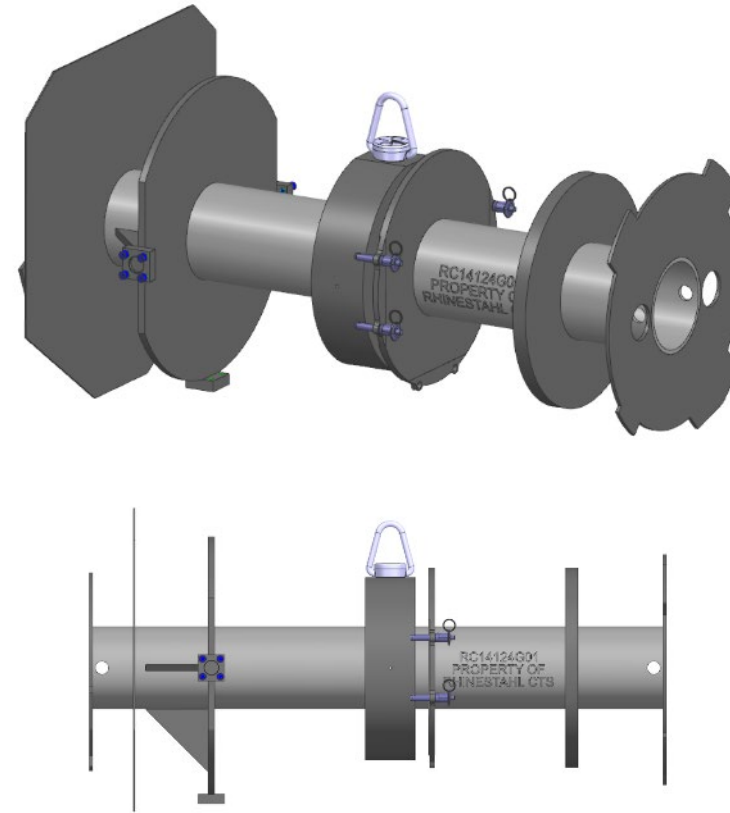


- F404 (Big Blue) containers - Qty 99
- F404/F414 Installation trailers
- F414-39E Module Containers
- T700 PT Module Containers for GE
- F110 ETU overhaul/repair for USAF
- F118 container design for USAF

F110 ETU Refurbishment



T700 Engine Shipping Container



The background of the slide is a solid dark blue color. Overlaid on this background are several thick, flowing, wavy lines in a lighter shade of blue. These lines originate from the left side and curve towards the right, creating a sense of movement and depth. The lines vary in thickness and curvature, some appearing more vertical while others are more horizontal, giving the overall composition a dynamic and organic feel.

FUTURE DRIVE



SYSTEM HIGHLIGHTS

EFFICIENCY

FutureDrive^{NG+} allows borescope inspections to be accomplished by a single technician, reducing shop costs and labor inspection hours by more than 50%.

EASE-OF-USE

Simply connect the cables, attach the motor, plug in, and go. Operators can use continuous turning, interval turning, or rotate the engine one blade at a time.

ACCURACY

The motor encoder allows for better resolution and accurate turning. Stop at any blade and return to any blade with bi-directional turning. You can flag damaged blades, store the location, and return to that blade with just the push of a button. Inspectors can continuously turn in both directions, clockwise and counterclockwise, up to 999 turns.

BASE KIT INCLUDES

- + Drive Motor
- + Foot & Hand Switch
- + Power Unit
- + Wireless or Wired Hand Control
- + Carry Case





Readiness Hub

READINESS HUB

The innovative and comprehensive tooling management platform at the center of our support and services program.





RELIABLE + READY